



Smart Life

-  Intelligent speaker voice control
-  Remote control of mobile app

LCD high definition screen
Tempered glass surface
AE-669K (0-10V) -WiFi

Smart
Intelligent controller
Creating intelligent and comfortable home life

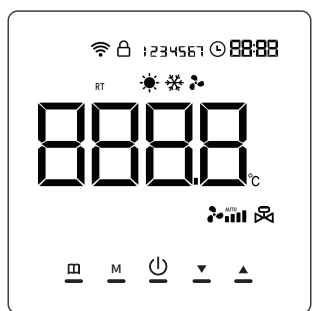
1. Product Introduction

AE series intelligent controller. It is widely used in families, residential buildings, schools, hotels, hospitals, offices and other environments to achieve ideal room temperature.

Modern design and fashionable appearance.
The LCD display can be seen clearly even in the dark.
Tempered glass surface can avoid finger scratch.

The touch button is easy to operate.
Accurate comfort control can keep the temperature within 1 ° C of your set value.

Data is automatically stored when the power is turned off.
The WiFi model can be remotely controlled using a mobile app/intelligent speaker voice control.



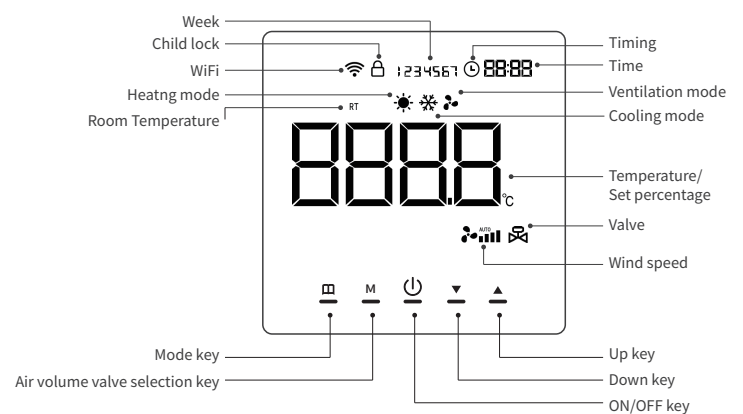
2. Product parameters

Temperature sensing element	Thermistor
control accuracy	±1°C
Installation hole spacing	60mm (standard)
work environment	0-40°C
Power supply voltage	110-230VAC 50\60Hz
Rated power	5A
Shell material	PC+ABS flame retardant
temperature range	5-35°C (Adjustable)

3. Operating instructions

- Power on/off:** Short press the " ⏻ " key to turn on or off the thermostat.
- Child lock setting:** Press and hold the "M" key for 3 seconds to turn on or off the child lock function. The controller will operate normally, but the button function will be disabled.
- Set temperature:** When turned on, press the "▲" key first, and the temperature will flash, allowing for temperature setting. Short press the "▲" or "▼" keys to adjust the set temperature, with each button changing the set temperature by 1 ° C.
- Mode switching:** Short press the " □ " key to switch between cooling and ventilation modes.
- Fan 100% setting:** When the fan is turned on, press "M" first, and the " 🌀 " symbol will flash to set the air volume. Short press the "▲" or "▼" keys to adjust the set air volume, and each press will change the set air volume by 1%.
- Valve percentage setting:** When turned on, first press "M", the " 🚰 " symbol will flash, and the valve opening can be set. Short press the "▲" or "▼" keys to adjust the valve opening setting, and each press will change the valve opening by 1%.
- Time setting:** Long press the " □ " key to set the time, and the time will flash. Press the " □ " key to switch between minutes, hours, and weeks, and press the "▲" or "▼" keys to adjust the value.
- Single timing setting:** When turning on, you can set a single timed shutdown. When turning off, you can set a single timed shutdown: long press the " □ " key for a flashing time, then press the " □ " key until the timer "--:--" appears. Press the "▲" or "▼" key to set the specific timing for turning on or off. After setting is complete, press the "M" key to exit. At this time, the screen will display a " ⌚ " mark, indicating successful setting.
- Cancel single timer setting:** Long press the "▼" key when turning on: Cancel timed shutdown.
- Long press the "▼" key during shutdown to cancel the scheduled startup.**

4. Show Introduction



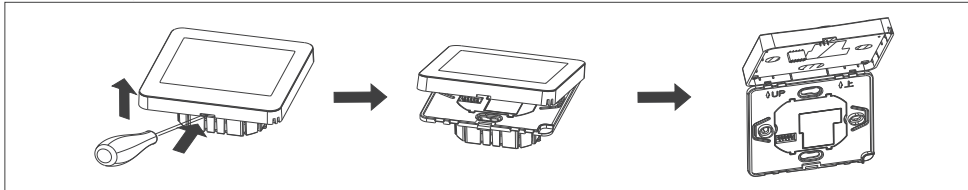
5. Advanced setting

Press and hold the "▲" and "▼" keys for 3s while shutting down the machine to enter the advanced setting function. The specific operation is as follows: Then briefly press "□" key to switch parameters, press "▲" and "▼" to adjust parameter values, and press "⏻" key to exit saving.

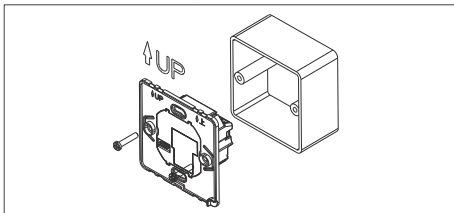
Numbers	Current display value definition	Range	Explain	Default
00	Temperature correction value	±10.0°C	Adjust to the correct temperature	0°C
01	Set the upper temperature limit value	lower limit -60°C	Set maximum temperature value	35°C
02	Set the lower temperature limit value	5°C -lower limit	Set the minimum temperature value	5°C
03	Set the upper limit of air volume	80-100	Adjust to the appropriate value	100
04	Set the lower limit of air volume	10-30	Adjust to the appropriate value	10
05	Set the upper limit value of the valve body	80-100	Adjust to the appropriate value	100
06	Set the lower limit value of the valve body	10-30	Adjust to the appropriate value	10
07	Blind spot value	00-10	Adjust to the appropriate value	01
08	Low temperature protection value	00-01	00 closes, 01 opens	00
09	Delay output time value	00-10	0-10 second delay output time	01
10	Uncontrolled value of refrigeration fan	00-01	00 closes, 01 opens	00
11	Uncontrolled value of heating fan	00-01	00 closes, 01 opens	00
12	Standby display mode	00-02	00- No change in standby display 01. Standby display real-time temperature 02- Standby does not display	01
13	Standby backlight brightness selection value	00-10	Adjust to the appropriate value	01
14	Enter standby time value	01-60	Unit: 10s	06
15	Restore factory settings	00-01	01 Restore factory default	00

6. Installation method

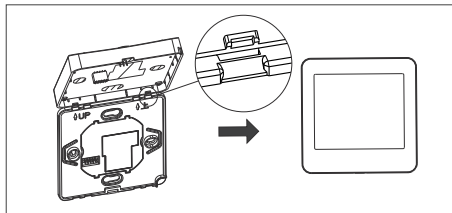
1. Remove the front panel of the thermostat with a screwdriver.



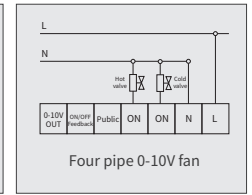
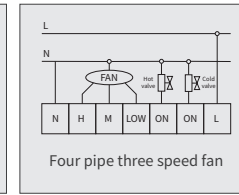
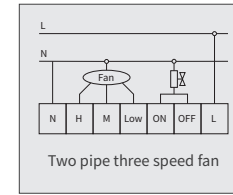
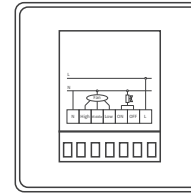
2. Install the rear shell of the thermostat in the cassette on the wall, tighten the screws, and then fix the front panel of the thermostat on the rear shell.



3. Fix the snap at the bottom of the thermostat.

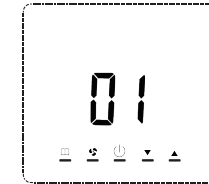
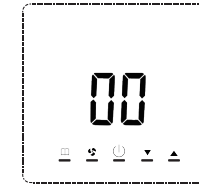


7. Wiring diagram



8. WiFi connection

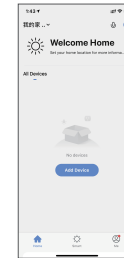
WiFi reset: (All products have been reset with WiFi before leaving the factory. To ensure the wifi configuration is smooth or the user misoperation and other reasons, it is recommended that all wifi configurations should be initialized and reset.): In the shutdown state, long press the "⏻" key of the temperature controller, and 00 will appear. Then press the "▲" key to adjust 00 to 01, and then press the "⏻" key to save to complete the wifi reset of the temperature controller.



Connect the device to the APP (first scan the QR code to download the APP, complete the registration, and then follow the following steps to configure the WiFi)

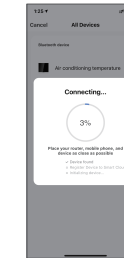
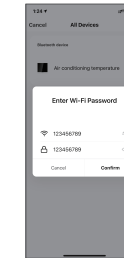
1. Bluetooth connection

Turn on the Bluetooth function of the phone, and then open the downloaded APP. Wait a few seconds for the following picture to appear, click "Go to add".



2. Search for device

The password appears automatically or manually enter the password. Click "Confirm" to show the percentage connection progress.



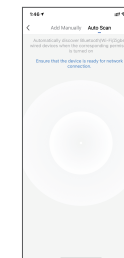
3. Connection complete

Click on the "+" sign. Connection complete.



4. Auto connect

Or choose automatic connection. Wait for the following picture to appear, click "Next".



5. Connection complete

Click "Done" to complete the connection.



Two-dimensional code of APP